

# SEED TO YIELD



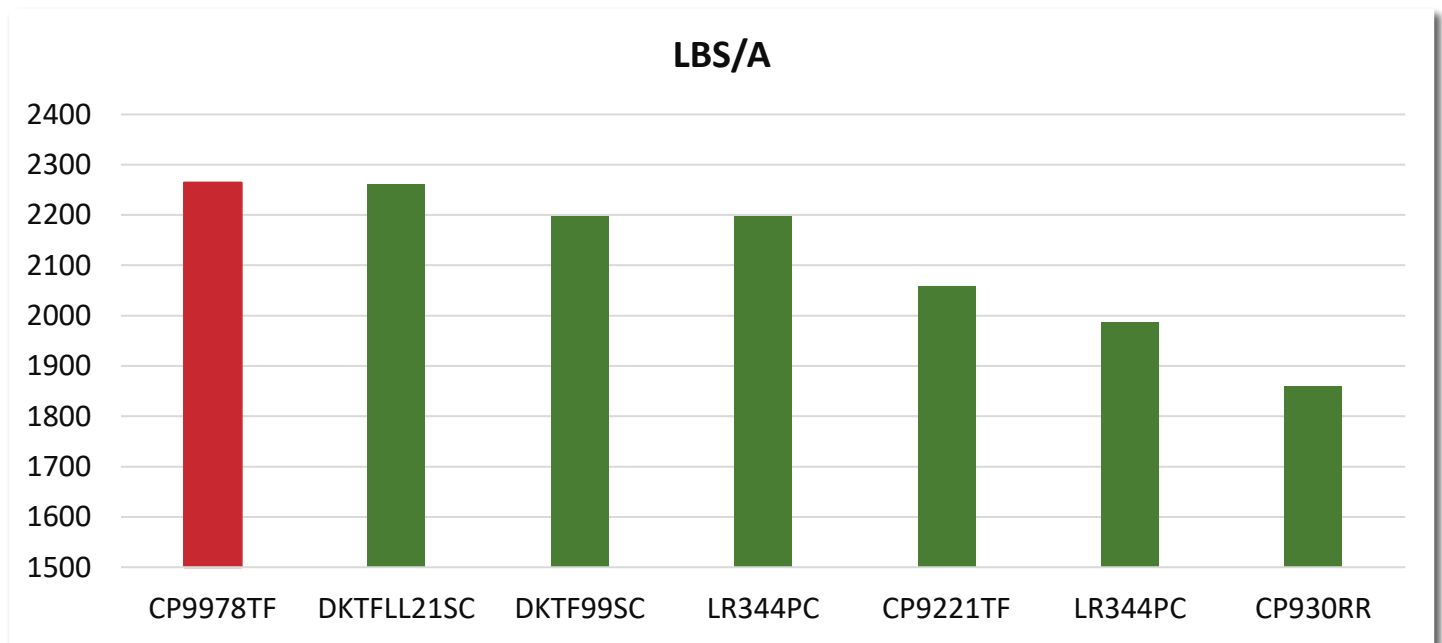
OBSERVATIONS FROM THE WEEK OF: OCTOBER 24, 2022

## CP9978TF *TruFlex* CANOLA

- High yield potential and excellent shatter for yield loss protection in straight-cut systems.
- CROPLAN's first Straight-Cut Plus hybrid.
- Excellent vigor for emergence through heavy trash, cold soils, no-till
- Good stress tolerance but best performance in moderate to higher yield environments.
- LepR3, RlmS provide enhanced blackleg resistance.

[LEARN MORE ABOUT CP9978TF](#)

## 2022 Answer Plot® Data ID – ND – MT



2022 Bonners Ferry, ID; Fairfield, MT; Wilton, ND Summarized RR/TF Answer Plot® Data.

All photos are either the property of WinField United or used with permission.

© 2022 WinField United. Important: Always read and follow label instructions. Crop performance descriptions are based on internal trials conducted by WinField United and/or sourced from the genetic supplier and may change as additional data is gathered. Crop performance depends on many factors beyond the control of WinField United, including without limitation, rainfall, temperature, soil type, crop production patterns or unforeseen disease pressure. Answer Plot, CROPLAN, WinField, and WinPak are trademarks of WinField United. The Roundup Ready 2 Xtend® traits may be protected under numerous United States patents. It is unlawful to keep CROPLAN® Enlist E3®, Roundup Ready 2 Yield®, Roundup Ready 2 Xtend® and XtendFlex® soybeans for planting or transfer to others for use as a planting seed. Asgrow®, Channel®, Droughtgard®, Roundup Ready 2 Xtend®, VT Double Pro® RIB Complete®, Smartstax®, Trecepta® and XtendFlex® are trademarks used under license from Bayer Group. Pioneer is a registered trademark of DuPont. All other trademarks are the property of their respective owners.

# SEED TO YIELD

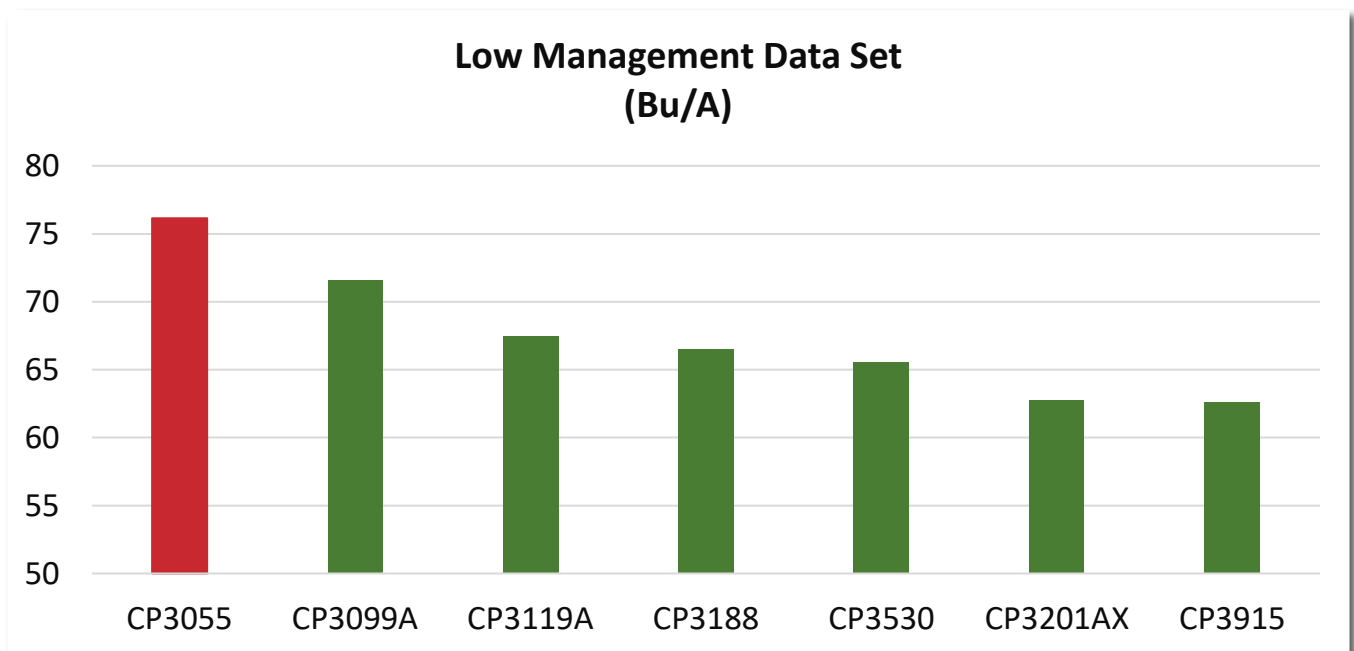


OBSERVATIONS FROM THE WEEK OF: OCTOBER 24, 2022

## CP3055

- Unique genetics to the CROPLAN® brand lineup and the industry.
- Semi-solid stem for Western wheat-stem saw-fly tolerance, while still carrying excellent yield potential!
- Strong disease package on a very large plant type (almost double flag leaf size of CP3530).
- Answer Plot® data shows great performance in low management systems (low N and low pops).

## 2022 Answer Plot® Data – ND



2022 Berthold, Buxton, Fessenden, New Salem & Wilton, ND Answer Plot® Location Data. Low N, Low population data set

All photos are either the property of WinField United or used with permission.

© 2022 WinField United. Important: Always read and follow label instructions. Crop performance descriptions are based on internal trials conducted by WinField United and/or sourced from the genetic supplier and may change as additional data is gathered. Crop performance depends on many factors beyond the control of WinField United, including without limitation, rainfall, temperature, soil type, crop production patterns or unforeseen disease pressure. Answer Plot, CROPLAN, WinField, and WinPak are trademarks of WinField United. The Roundup Ready 2 Xtend® traits may be protected under numerous United States patents. It is unlawful to keep CROPLAN® Enlist E3®, Roundup Ready 2 Yield®, Roundup Ready 2 Xtend® and XtendFlex® soybeans for planting or transfer to others for use as a planting seed. Asgrow®, Channel®, Droughtgard®, Roundup Ready 2 Xtend®, VT Double Pro® RIB Complete®, Smartstax®, Trecepta® and XtendFlex® are trademarks used under license from Bayer Group. Pioneer is a registered trademark of DuPont. All other trademarks are the property of their respective owners.



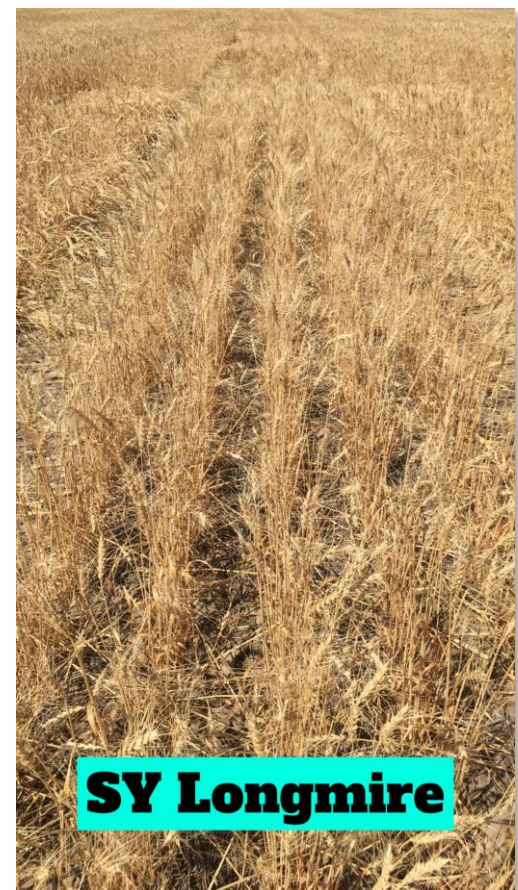
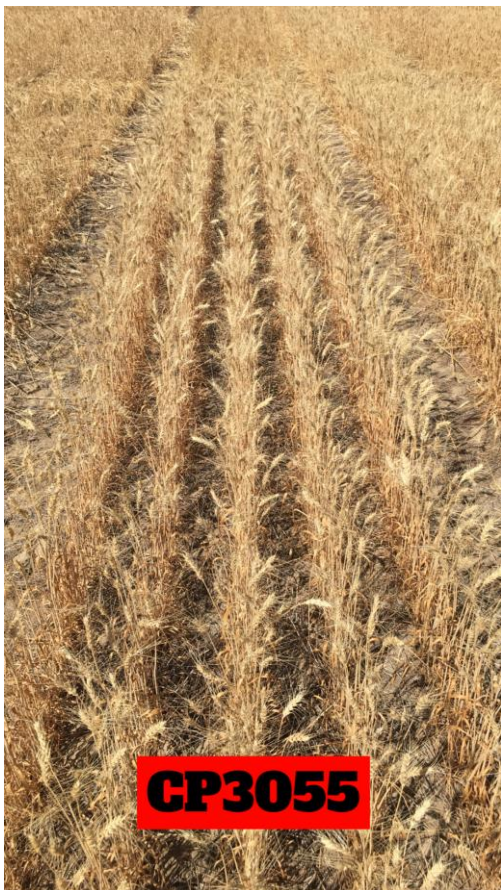
# SEED TO YIELD



OBSERVATIONS FROM THE WEEK OF: OCTOBER 24, 2022

## CP3055, cont'd

- In 2022, the Ft Benton Answer Plot® performance trial had significant saw-fly damage.
- CP3055 showed strong tolerance, even slightly less damage than SY Longmire!



Photos from 2022 Ft Benton Answer Plot performance trial.

All photos are either the property of WinField United or used with permission.

© 2022 WinField United. Important: Always read and follow label instructions. Crop performance descriptions are based on internal trials conducted by WinField United and/or sourced from the genetic supplier and may change as additional data is gathered. Crop performance depends on many factors beyond the control of WinField United, including without limitation, rainfall, temperature, soil type, crop production patterns or unforeseen disease pressure. Answer Plot, CROPLAN, WinField, and WinPak are trademarks of WinField United. The Roundup Ready 2 Xtend® traits may be protected under numerous United States patents. It is unlawful to keep CROPLAN® Enlist E3®, Roundup Ready 2 Yield®, Roundup Ready 2 Xtend® and XtendFlex® soybeans for planting or transfer to others for use as a planting seed. Asgrow®, Channel®, Droughtgard®, Roundup Ready 2 Xtend®, VT Double Pro® RIB Complete®, Smartstax®, Trecepta® and XtendFlex® are trademarks used under license from Bayer Group. Pioneer is a registered trademark of DuPont. All other trademarks are the property of their respective owners.